

Staff/Judge/Sponsor Assignments

Thanks for your help with USU Physics Day at Lagoon! Tasks have been assigned on the attached list. Please check in with the Leader of the activity listed before the times listed to find out what you can do to help. If you cannot find the right person or have additional questions, ask the USU staff at the Lagoon Auto Gate Entry or on the stage of the Davis Pavilion.

Staff/Judge/Sponsor Entry and Ticketing

USU Physics Day at Lagoon 2018

All teachers, chaperones and students are to enter Lagoon through the main Auto Gate Entry on the southwest corner of the park.

- a. The Lagoon Auto Gate entry WILL NOT open until approximately 8:30 a.m. Please do not have school buses and other transportation arrive much before 8:30 a.m.; we aim to avoid traffic blocking the frontage road.
- b. The Lagoon Park (rides) Main Gates will open no earlier than 9:30 a.m. No one will be allowed to enter the Park prior to that time, regardless of their affiliation.
- c. USU staff will have a table for **TEACHERS ONLY** at the main entrance to hand out all ride and lunch tickets to schools and chaperones. Please pre-register your school on the web site to help streamline this process.

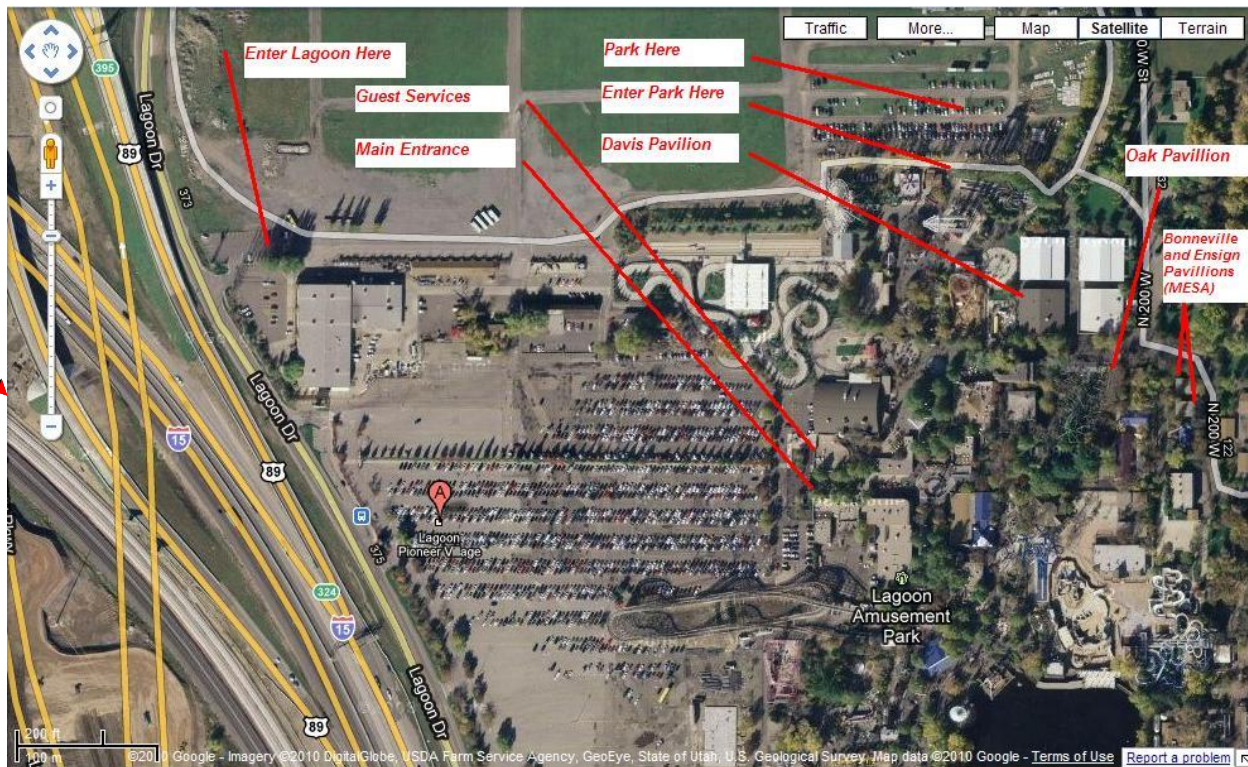
All USU/INL staff, judges and sponsors helping set up and run USU Physics Day are to enter through the north Vendor/Employee lot.

- a. The north Vendor/Employee lot will be open at 7:30 a.m. to allow sponsors, volunteers and INL/USU staff to get in to set up. Access this through the employee entrance and security hut at the northwest corner of the Lagoon park along the main frontage road adjacent to the Interstate.
- b. **EVERYONE** except a select few (about 6-8 vehicles) **MUST** park in the graveled area and walk into the park at the North Turnstile. Parking is free in this area and access to Davis Pavilion is easier than through the Main Gate.
- c. USU/INL staff and Lagoon Ticketing will have individuals stationed at a table at the North Turnstile to hand out tickets and to allow entry to those with the appropriate Single Day Passport voucher. **NO ONE WILL BE ALLOWED ENTRY INTO THE PARK WITHOUT A TICKET.**
- d. Lagoon Security will create and monitor a path (and block off access to the main Park) from North Turnstile to the Davis Pavilion.
- e. If you have something that needs to be carried in (and it can't be carried by hand) Lagoon personnel will be staffed to help with electric carts.
- f. You should be at Lagoon no later than 9:00, but if you arrive after ~9:30, you will need to enter via Guest Service on the north side of the Main Gate to Lagoon to gain entry to Lagoon. They will issue an entry pass and lunch ticket.

Access to the Picnic Chairman Lot is restricted to vehicles that have exhibits that are too large to carry in by hand or with the Lagoon carts.

- a. Access to the Picnic Chairman Lot is at the discretion of USU. USU must provide a list to Lagoon of all individuals needing access to the Picnic Chairman Lot no later than May 11, 2018.
- b. These individuals will need to obtain their Single Day Passports from the table at the North Turnstile **prior** to entry into the Picnic Chairman lot.
- c. Lagoon Security will only allow those with the proper identification and/or ticket entry into the Picnic Chairman Lot.
- d. No vehicles may drive past the Picnic Chairman Lot. If help is needed to pack materials into Lagoon, contact a member of Lagoon's staff upon arrival and a Cushman will be provided to transport your materials.

Staff/Sponsors/Judges are welcome to bring guests to USU Physics Day at Lagoon. However, we can only offer free entry passes and lunch tickets to those who are helping run the event. Lagoon is very generous with these passes, and we want to make sure not to take advantage of their generosity. This year entry passes are available for \$34.00 at the front gate, at a substantial discount from the regular rate of \$58.95.



Staff/Sponsor entry locations. Enter from Lagoon Drive through the employee gate on the north side of Lagoon. Proceed at the direction of the guard at the gatehouse to the employee lot near the Samurai ride. Enter the park at the gate in the fence by the Samurai ride. Check in at the table by this gate to get your entry/ride pass and lunch ticket. Proceed to Davis Pavilion. Lagoon staff will provide electric carts to transport your displays and equipment. Vehicles with large loads may drive on to the chairman picnic lot after checking in at the Samurai table; prior arrangements for this must be made with USU/INL staff.

