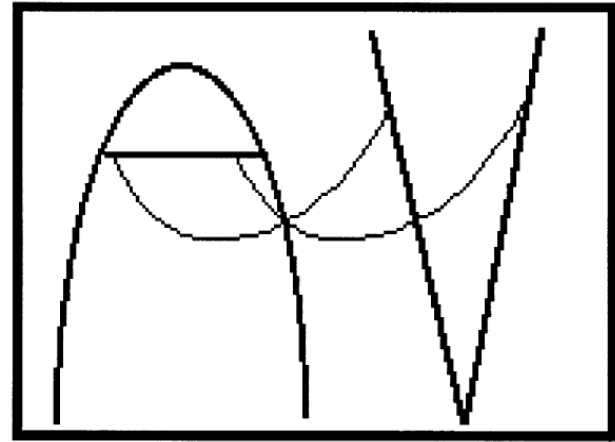


## SKY COASTER

---



1. Measure the total time that the ride takes from the beginning, when the riders begin to be hoisted upwards, until the end when it comes to a stop.
2. Determine the number of swings for each ride.
3. Determine the cost per swing for the ride for each person on the ride if there are four people riding.
4. Determine the expense of the ride in dollars per hour for each rider if there are four riders on board. How does this compare, in dollars per hour, with seeing a movie on Friday night?

How does this compare with the expense of your trip to Lagoon in dollars per hour?